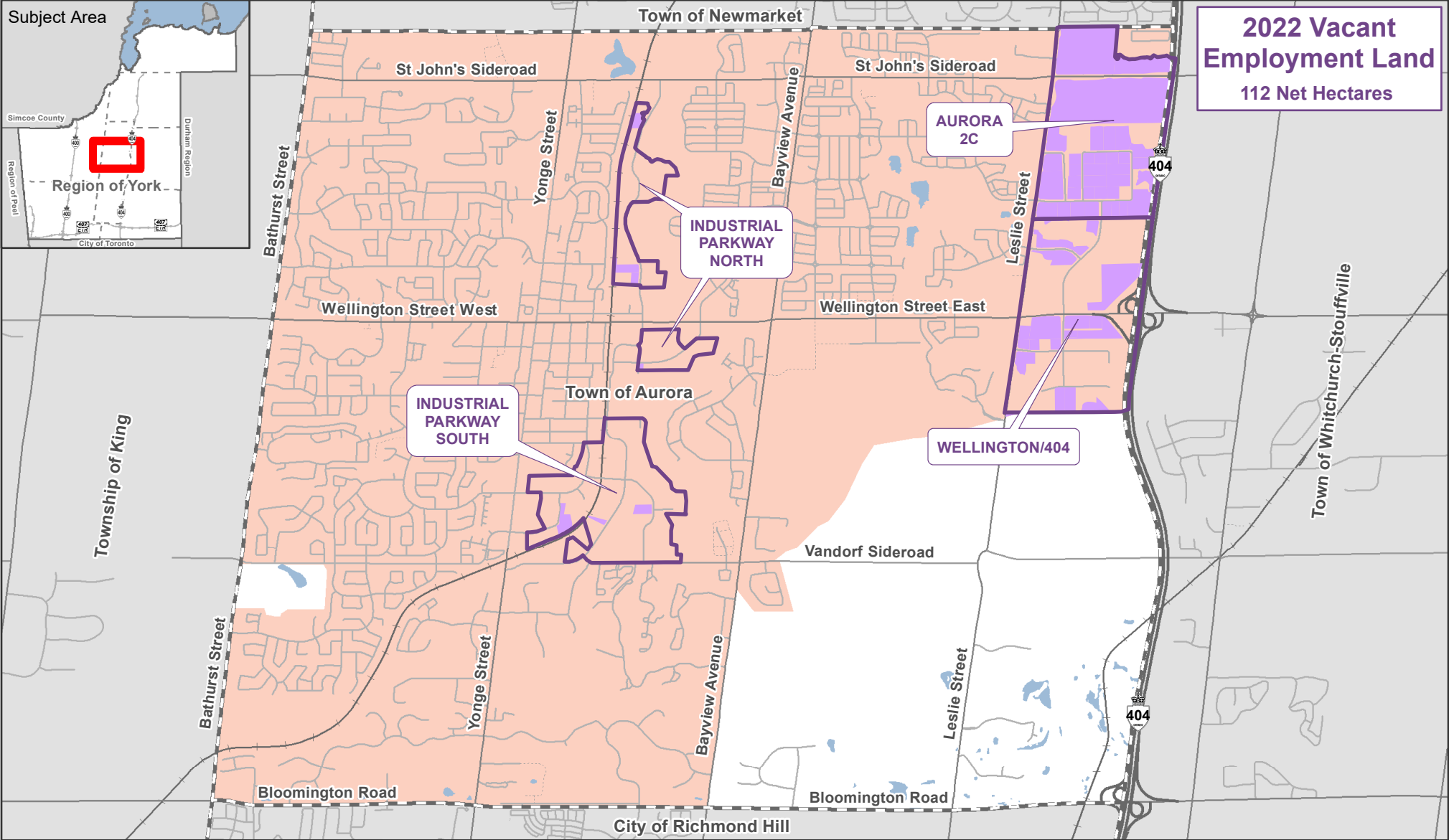


2022 Town of Aurora Employment Areas



LEGEND

Employment Area Boundary

Vacant Employment Parcels

Regional Boundary

Municipal Boundary

Towns and Villages

Urban Area

Waterbody

Watercourse

Freeway

Regional Road

Local/Rural Road

Proposed Road

Railway



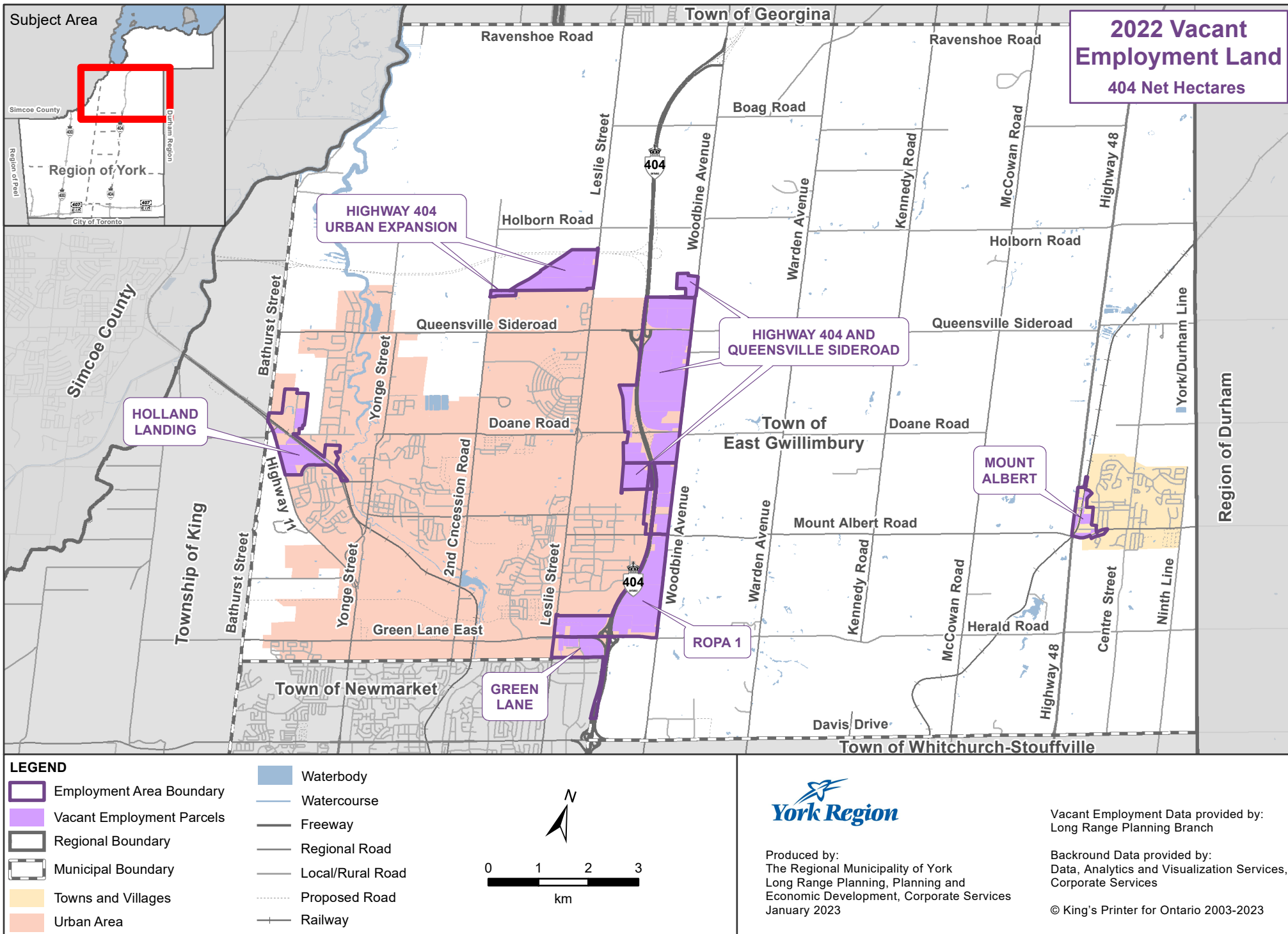
Produced by:
The Regional Municipality of York
Long Range Planning, Planning and
Economic Development, Corporate Services
January 2023

Vacant Employment Data provided by:
Long Range Planning Branch

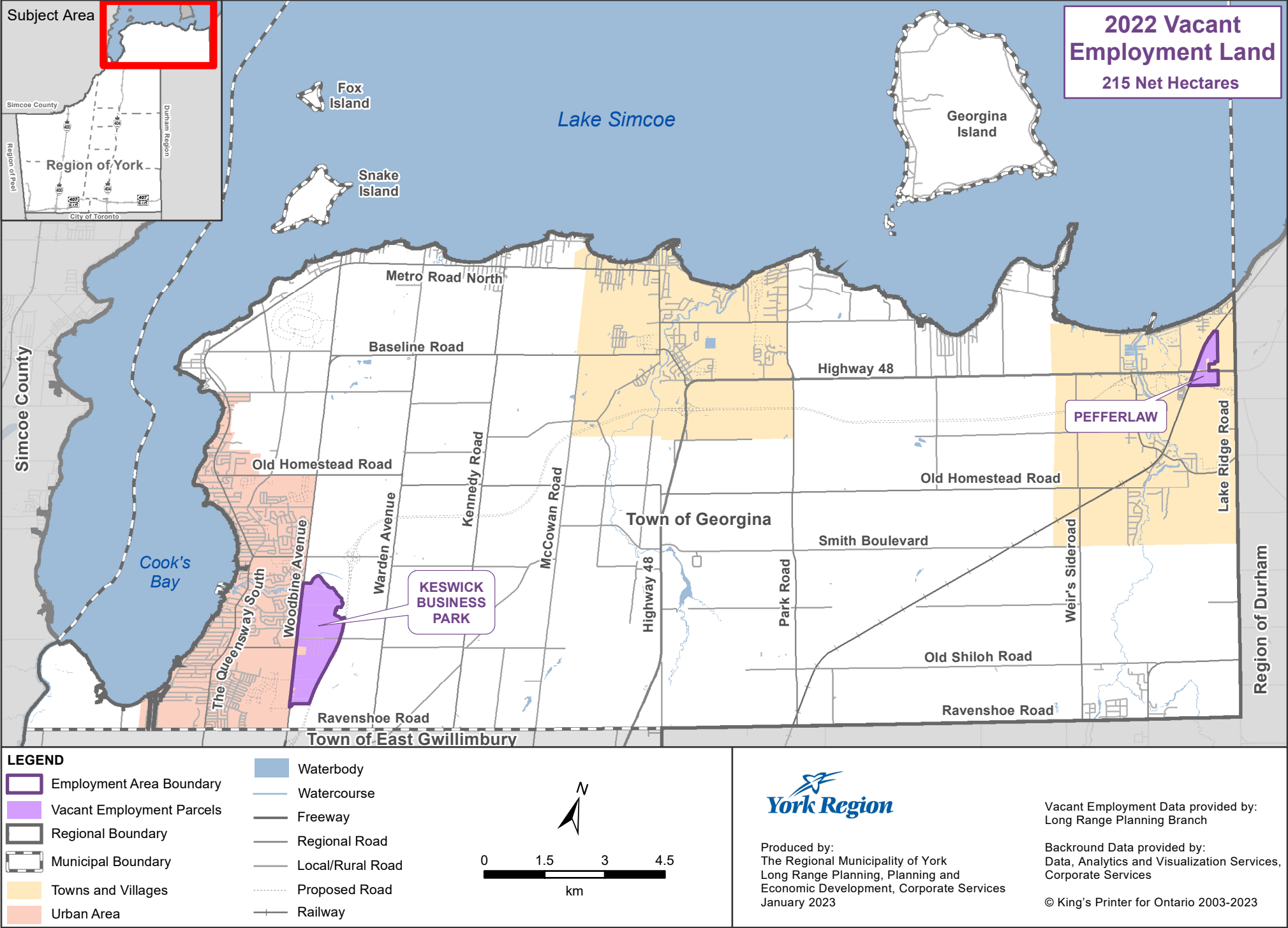
Background Data provided by:
Data, Analytics and Visualization Services,
Corporate Services

© King's Printer for Ontario 2003-2023

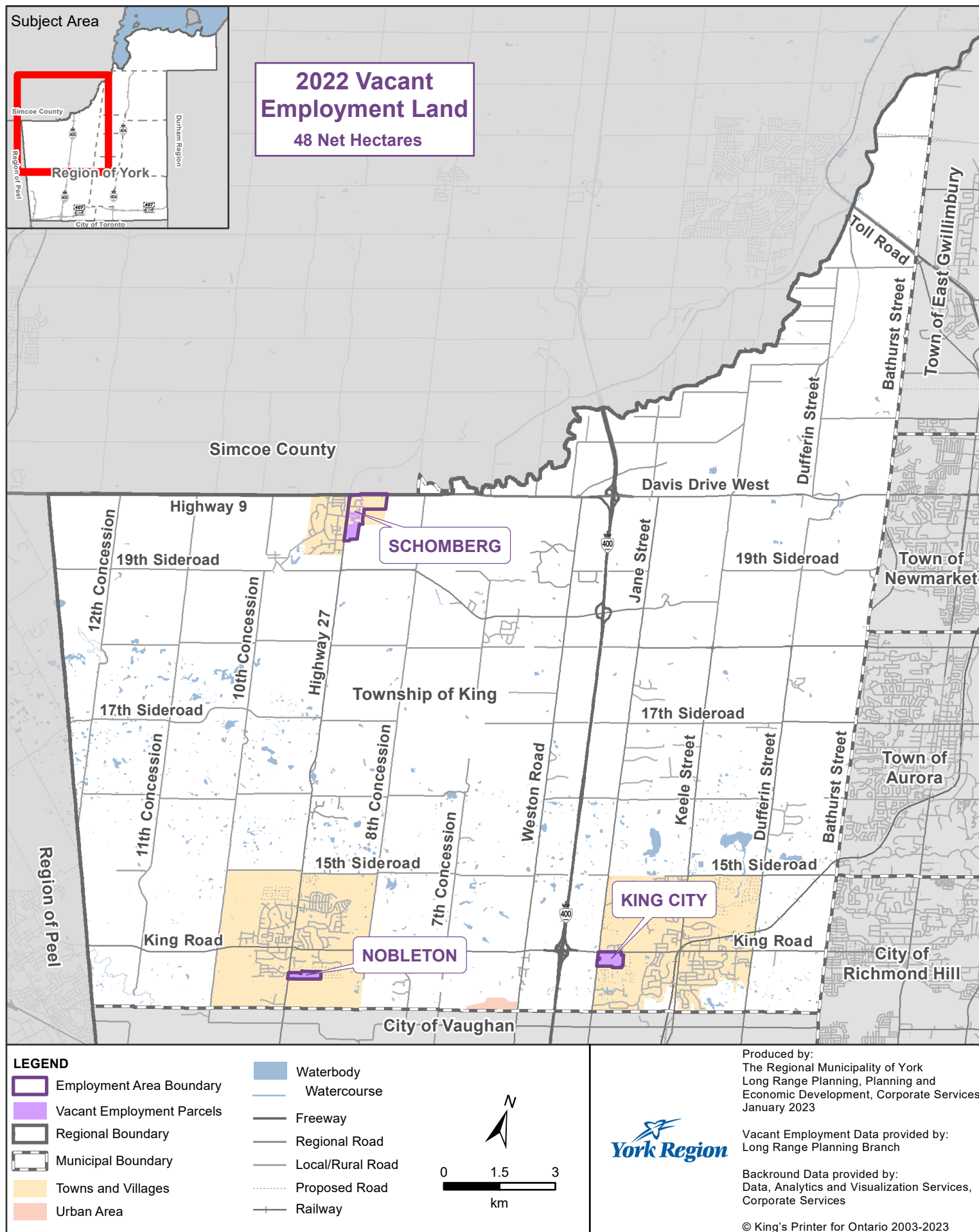
2022 Town of East Gwillimbury Employment Areas



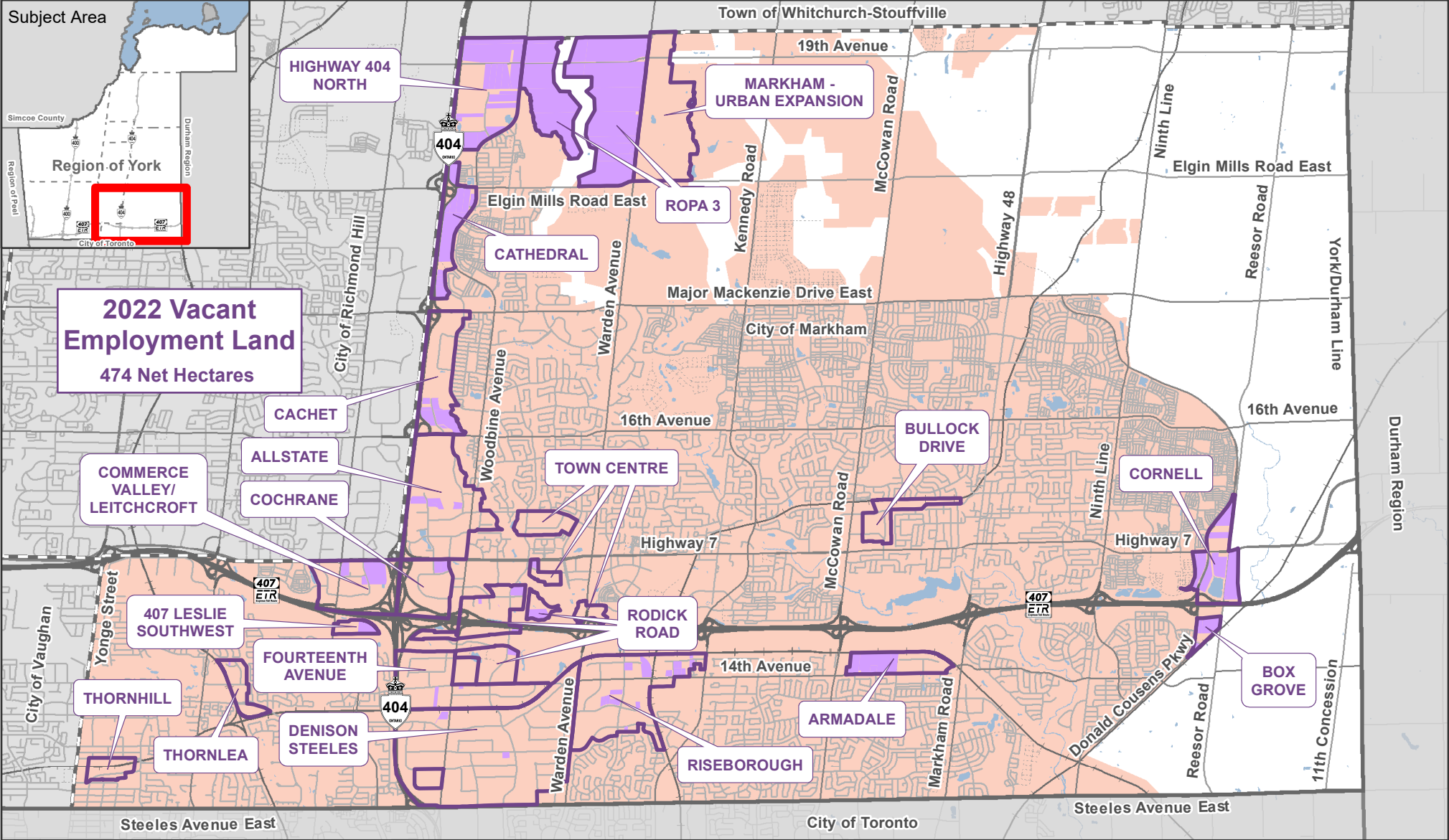
2022 Town of Georgina Employment Areas



2022 Township of King Employment Areas



2022 City of Markham Employment Areas



LEGEND

- Employment Area Boundary
- Vacant Employment Parcels
- Regional Boundary
- Municipal Boundary
- Towns and Villages
- Urban Area
- Waterbody
- Watercourse
- Freeway
- Regional Road
- Local/Rural Road
- Proposed Road
- Railway

0 1 2 3 km

York Region

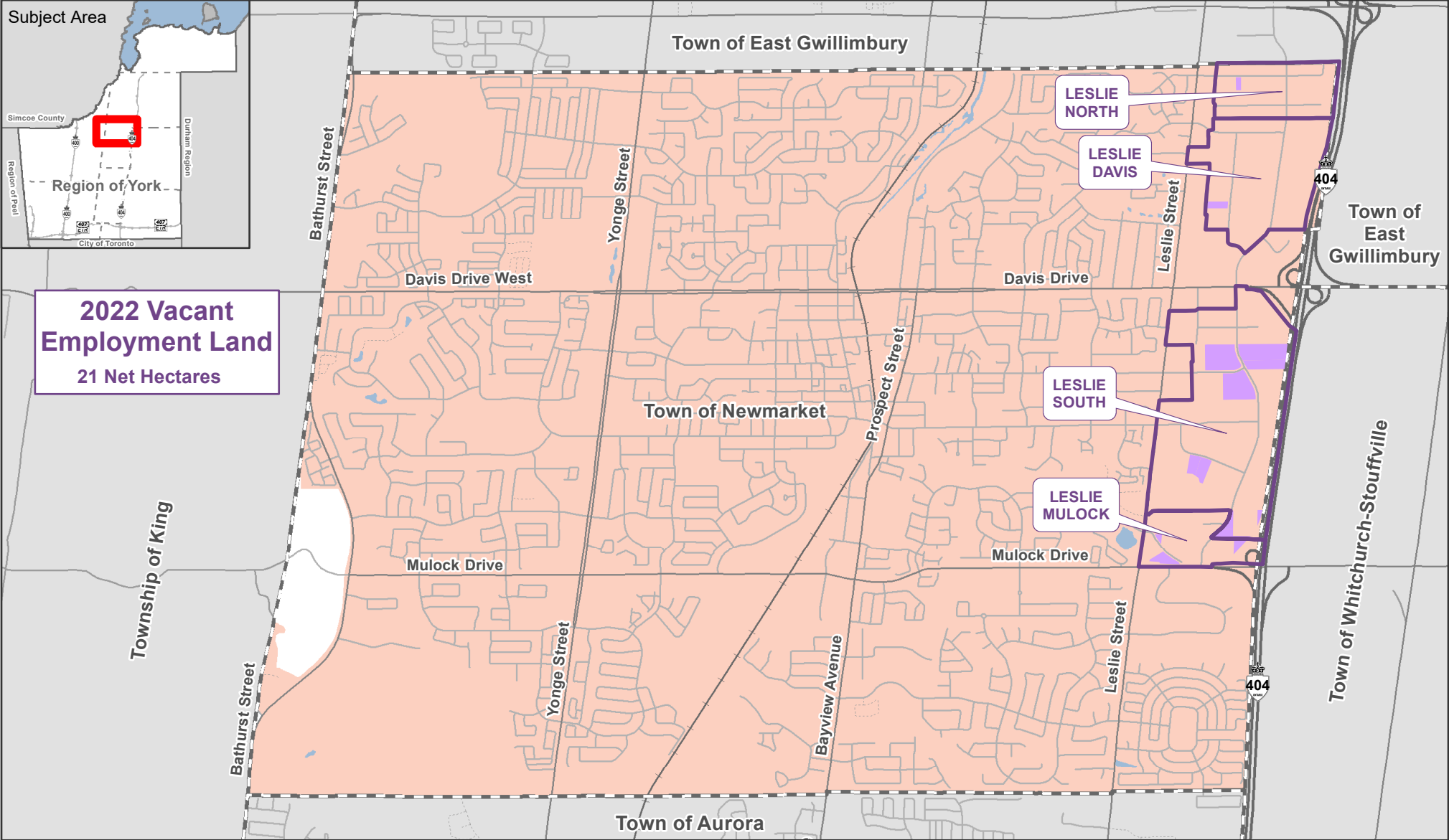
Produced by:
The Regional Municipality of York
Long Range Planning, Planning and
Economic Development, Corporate Services
January 2023

Vacant Employment Data provided by:
Long Range Planning Branch

Background Data provided by:
Data, Analytics and Visualization Services,
Corporate Services

© King's Printer for Ontario 2003-2023

2022 Town of Newmarket Employment Areas



LEGEND

- Employment Area Boundary
- Vacant Employment Parcels
- Regional Boundary
- Municipal Boundary
- Towns and Villages
- Urban Area

- Waterbody
- Watercourse
- Freeway
- Regional Road
- Local/Rural Road
- Proposed Road
- Railway

0 0.5 1 1.5 km



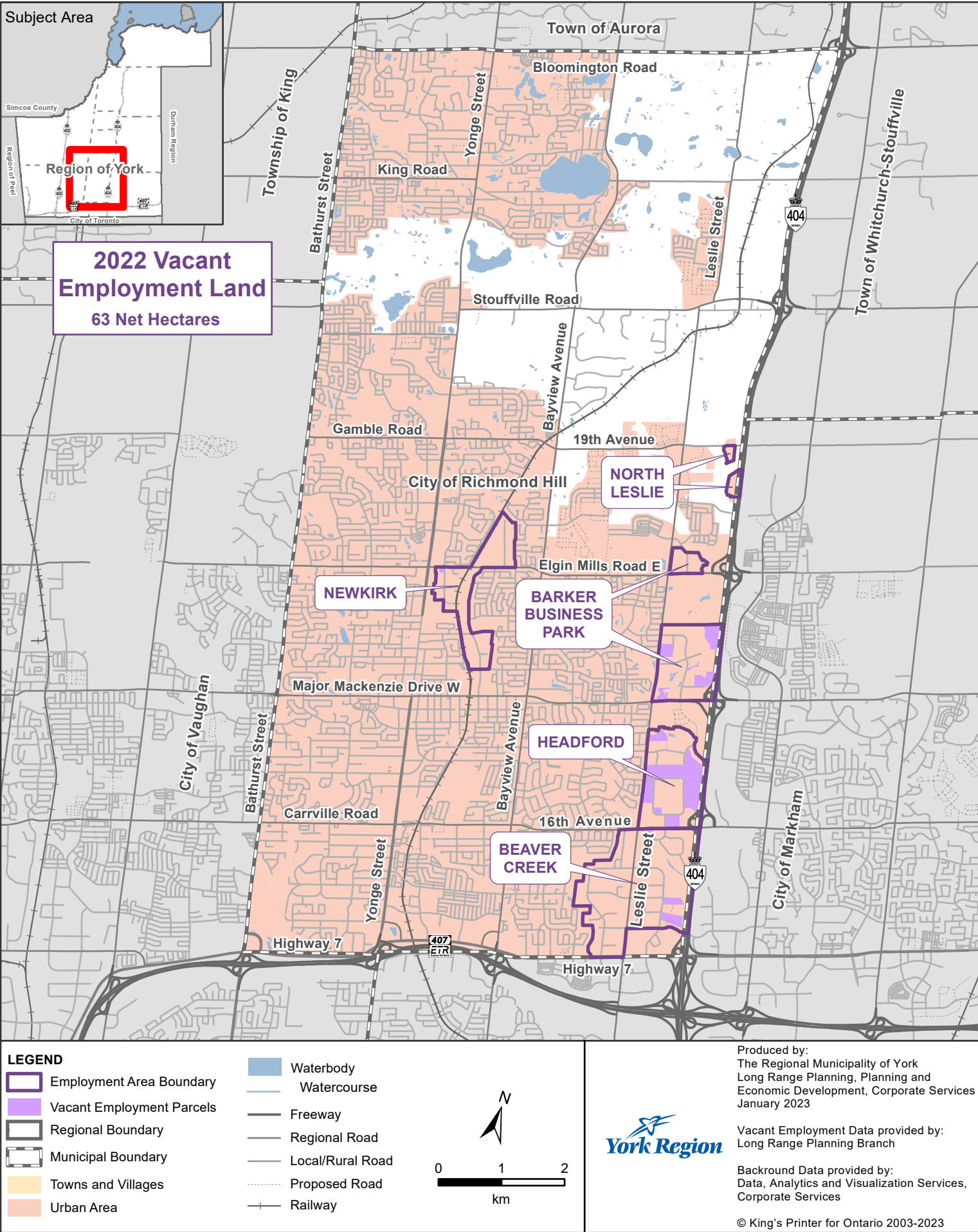
Produced by:
The Regional Municipality of York
Long Range Planning, Planning and
Economic Development, Corporate Services
January 2023

Vacant Employment Data provided by:
Long Range Planning Branch

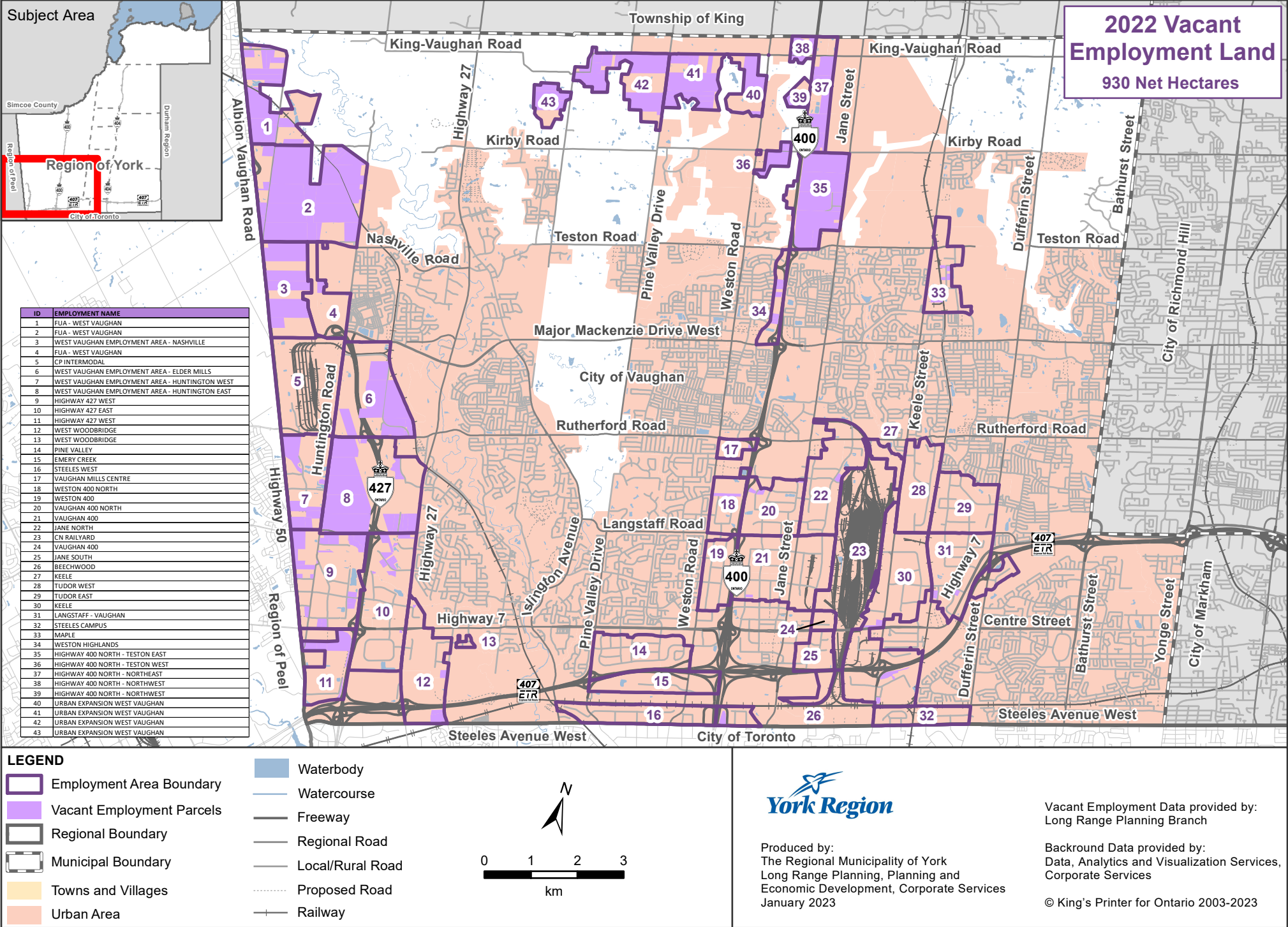
Background Data provided by:
Data, Analytics and Visualization Services,
Corporate Services

© King's Printer for Ontario 2003-2023

2022 City of Richmond Hill Employment Areas



2022 City of Vaughan Employment Areas



2022 Town of Whitchurch-Stouffville Employment Areas

